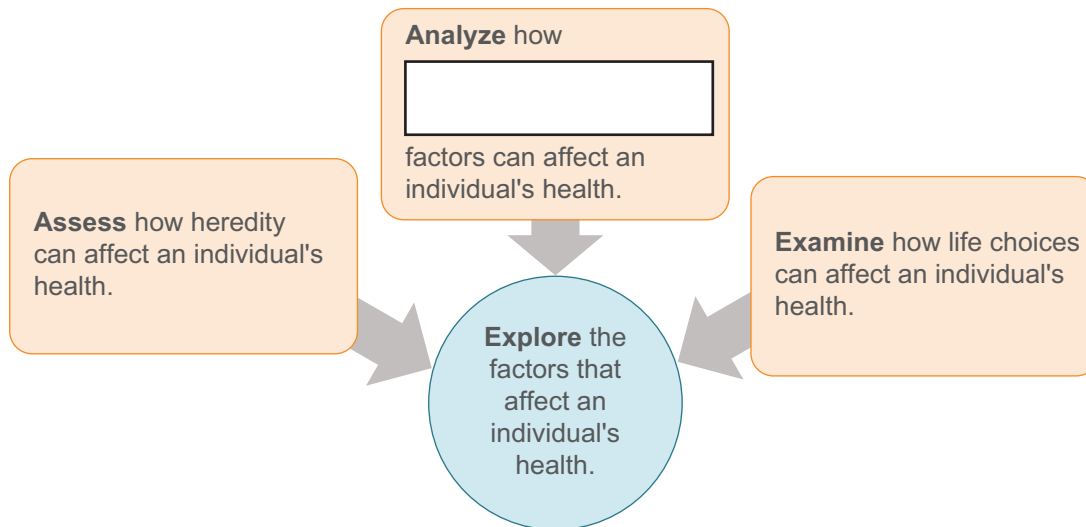




Lesson Question



Lesson Goals



Words to Know

Fill in this table as you work through the lesson. You may also use the glossary to help you.

probability	the [] that a given event will occur
cancer	a disease characterized by [] cells that can spread to other parts of the body
diabetes	a disease in which the [] does not produce enough insulin or the body does not use insulin effectively

W
2K

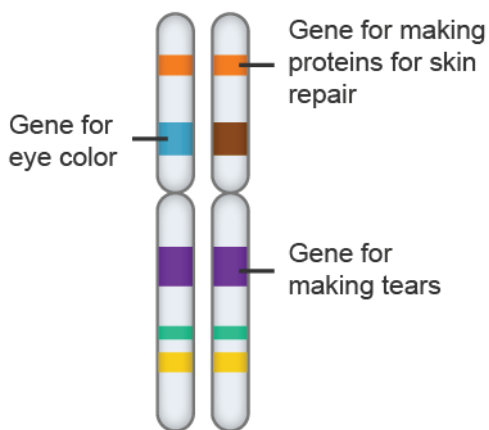
Words to Know

lichen	a fungus and an alga (or bacterium) growing together in a <input type="text"/> relationship
obesity	a condition in which an individual has a large amount of <input type="text"/> for his/her height
sickle-cell anemia	a disease in which the protein that carries <input type="text"/> in red blood cells is mutated

🔄

Heredity

- Genes are .
- Genes code for .
- Some genes, if , can cause an increased chance for certain .



Instruction

Human Health

Slide

2

Diabetes

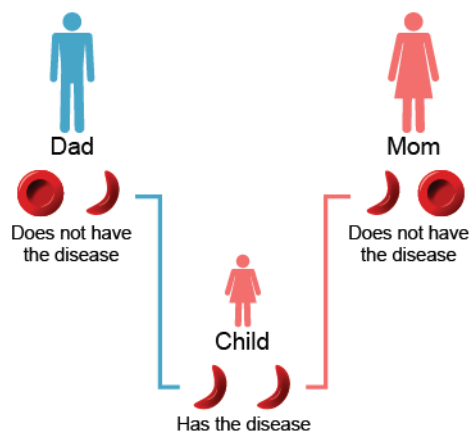
- There are types of **diabetes**.
 - Type 1, or diabetes
 - Type 2, or diabetes
- Diabetes may be caused by a combination of factors.
 - Inherited
 -
 - choices

4

Sickle-cell Anemia

- **Sickle-cell anemia** is a disease that affects red blood cells, causing them to form a sickle, or shape. The cells:

- have reduced ability to oxygen.
- blood vessels.
- cause .



Instruction

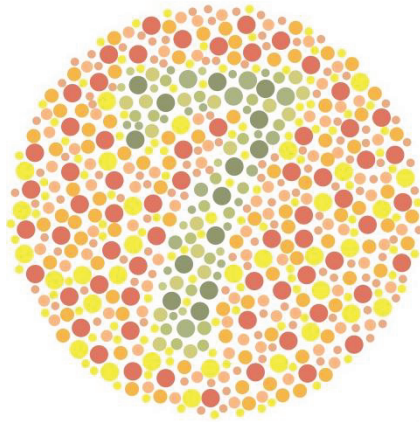
Human Health

Slide

4

Color Blindness

- Color blindness is a , trait.
- have a greater probability of getting the disease.



7

Water Quality

- Sources of pollution can be , but they are often .
- Dirt
-
-

Instruction

Human Health

Slide

7

Air Quality

air quality can increase asthma and other illnesses.



on a tree can indicate poor air quality.



The appearance of can indicate poor air quality.

9

Refrigeration

- Refrigerators allow for long-term of food. Using a refrigerator:
 - reduces the need for high amounts of .
 - slows the growth of and prevents food from spoiling.

Trash Collection

- Trash, if not properly of, can attract disease-carrying rats and insects.
- Trash can be reduced by .

Slide

12

Diet and Exercise

- Poor food and lack of can lead to obesity.
- Obesity can lead to:
 - .
 - disease.

Tobacco Use

The use of tobacco can cause , a disease characterized by abnormal cells that can spread to other parts of the .



lung



Tobacco smoker's lung

Summary

Human Health



Lesson Question

What factors influence an individual's health?



Answer

Slide

2

Review: Key Concepts

Heredity	Environment	Lifestyle
Inheriting certain <input type="text"/> may increase the probability of getting the disease.	Exposure to harsh <input type="text"/> and bacteria can increase the probability of sickness.	Living an unhealthy lifestyle by smoking or not eating properly can increase the probability of illness or disease.
<ul style="list-style-type: none"> • Diabetes • Sickle-cell anemia • <input type="text"/> 	<ul style="list-style-type: none"> • Asthma • Respiratory infections 	<ul style="list-style-type: none"> • Obesity • <input type="text"/>



Summary

Human Health

Use this space to write any questions or thoughts about this lesson.

A large empty rectangular box with a thin blue border, intended for student notes or questions.