

Warm-Up

Evaluating Public Health Information



Lesson Question



Lesson Goals

Learn to public health information.

Justify the of technologies to promote public health.

Explain how to effectively current public health issues.

Apply decision-making skills to health-related situations.

Warm-Up

Evaluating Public Health Information

W
2K

Words to Know

Fill in this table as you work through the lesson. You may also use the glossary to help you.

	justifiable, appropriate
	to make a judgement
	to watch closely for an extended period of time



Making Decisions

Factors that influence decision-making include:

- peers.
- .
- media.
- access to .
- involvement in school.
- cultural and religion.

Instruction

Evaluating Public Health Information

Slide

2

Benefits of Health-Related Websites

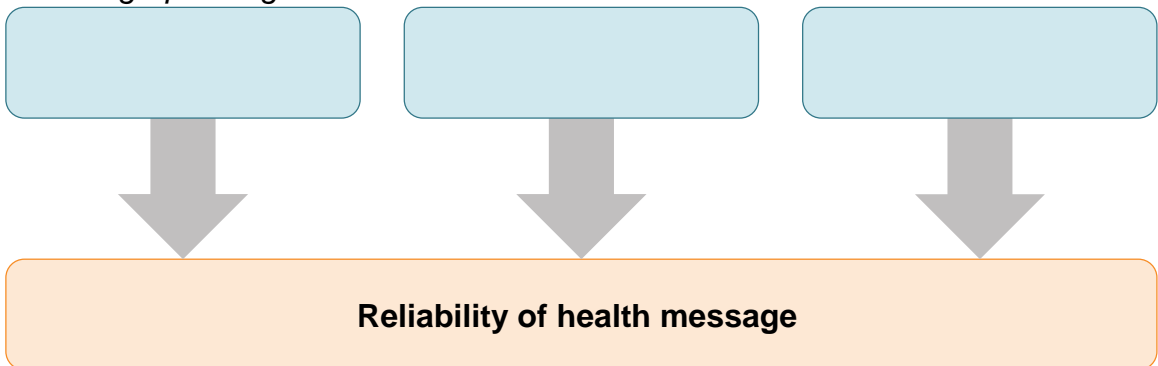
Health-related websites have various .

They can provide:

- health and wellness .
- the ability to symptoms.
- the ability to check drug interactions.
- to manage nutrition and fitness.

The Validity of Health-Related Websites

Fill in the graphic organizer.



Instruction | Evaluating Public Health Information

Slide

2

Evaluating Sources

Reliable or <input type="text"/> sources of health-related information:	Unreliable sources of information include sites that:
<ul style="list-style-type: none"> • have been recently updated. • list <input type="text"/> and resources for the information provided. • are well-known, reputable organizations. • include author biographies or <input type="text"/>. • are websites that end in .gov, .org, or .edu. 	<ul style="list-style-type: none"> • are <input type="text"/> for by sponsors or companies that profit from the site or its claims. • promise “miracle cures” or “instant results.” • are run by bloggers or promote <input type="text"/> claims. • rely on misleading personal testimonials.

Slide

4

Technology and Patient Access

makes it easier for people to access health-related

by helping them:

- refill prescriptions.
- appointments.
- locate community resources.
- research medical conditions.
- healthcare professionals.

Technology and Health at Home

medical technology provides accurate health information to

and allows them to screen their health from home.

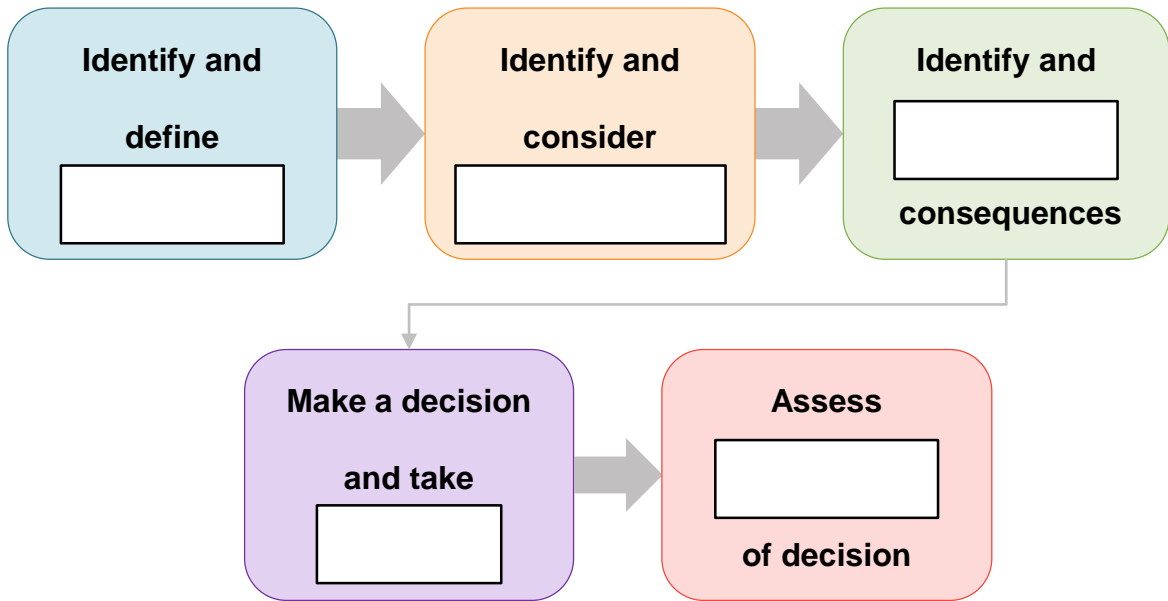
- Fitness trackers
- Heart rate monitors
- Digital blood-glucose meters
- Digital blood-pressure monitors

Instruction | Evaluating Public Health Information

Slide

8

The Decision-Making Process



10

Step One: Identifying and Defining the Decision

People face many health-related situations for which a decision-making

would be valuable. For example, people may have to

whether or not to engage in:

- drug use.
- sexual activity.
- alcohol consumption.

Instruction

Evaluating Public Health Information

Slide

10

Step Two: Identifying and Defining the Alternatives

When considering whether or not to engage in sexual activity, it is important to understand the .

Abstinence	
<p>This is the choice to not participate in activities that result in genital contact.</p> <ul style="list-style-type: none">• This includes any activity that can lead to sexually transmitted <input type="text"/> (STDs).• Abstinence is the only <input type="text"/> effective way to prevent STDs, sexually transmitted HIV, and pregnancy.	<p>This is the use of one or more devices, drugs, sexual practices, or surgical procedures that <input type="text"/> pregnancy. These include:</p> <ul style="list-style-type: none">• hormonal methods.• barrier methods.• natural family planning.

Instruction | Evaluating Public Health Information

Slide

12

Taking Action and Assessing the Outcome

The final steps in the decision-making process are to make a decision and assess the of that decision.

Step Three: Making a decision and taking <input type="text"/>	Step Four: Assessing the outcome of the decision
<ul style="list-style-type: none"> Choose to abstain Choose to engage in safe sex 	<ul style="list-style-type: none"> Am I satisfied with my decision? Would I make the <input type="text"/> decision again in the future? Why or why not?

15

Public Health Issues

A public health issue is an issue that affects a large part of a over a certain period of .

Issues include:

- chronic diseases.
- infectious diseases.
- environmental concerns.
- alcohol, drug, and tobacco use.

Instruction

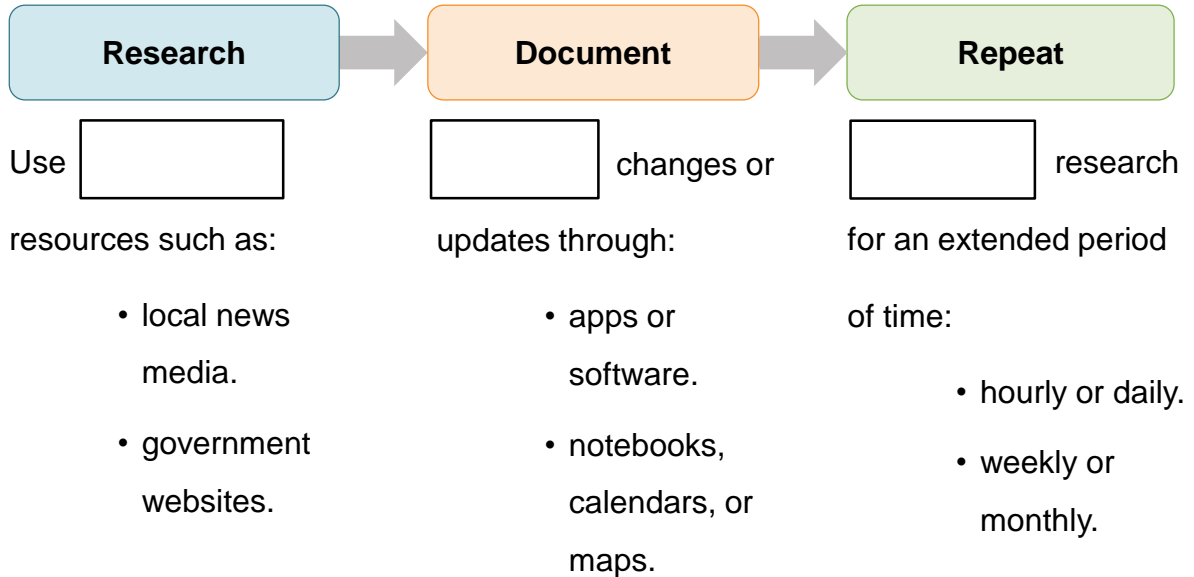
Evaluating Public Health Information

Slide

17

Monitoring a Public Health Issue

When you an issue, you watch it closely over a period of time.

**The Zika Virus**

In 2016 the World Health Organization declared Zika an international public health due to:

- the steep in the number of reported cases.
- the resulting birth of infants born to women infected with the virus.

Slide

17

Monitoring the Zika Virus

Underline words and phrases that give information to document or record.

There are no areas of ongoing, active transmission of Zika by mosquitoes in Florida. All previous Zika zones in the following areas of Miami-Dade County have been lifted after 45 days with no evidence of active transmission and no additional people infected. . . . The department continues to closely monitor the status of Zika virus in Florida. . . . If the department identifies any areas of concern, the public and the media will be notified.

The department advises residents and visitors to Miami-Dade County to remain vigilant about mosquito bite protection by draining all sources of standing water to keep mosquitoes from breeding and by wearing bug repellent.

–Florida Department of Health

Summary

Evaluating Public Health Information



Lesson Question

How do you evaluate public health information to make informed decisions?



Answer

Slide



Review: Key Concepts

<div><div></div><div>information</div></div>	<div>Decision-making process</div>	<div>Public health issue</div>
<ul style="list-style-type: none">• Relevant• Recent• Responsible	<ul style="list-style-type: none">• Define <div></div>• Consider alternative• <div></div> consequences• Take action• Assess outcome	<ul style="list-style-type: none">• Research• Document• <div></div>

Summary

Evaluating Public Health Information

Use this space to write any questions or thoughts about this lesson.